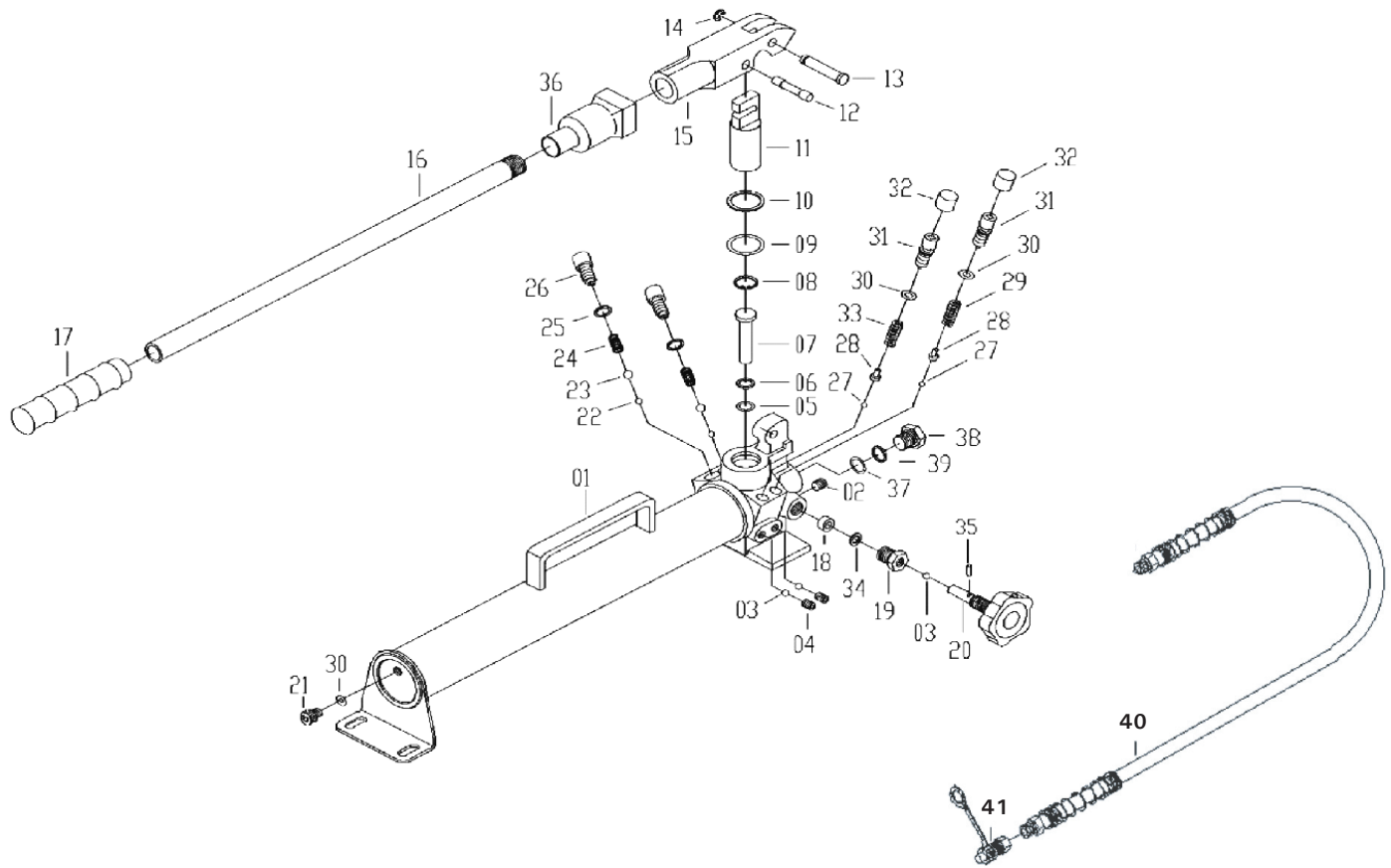




# ZHP-20 & ZHP-30 Parts Breakdown

Toll Free: 1-800-579-8088 Web: [www.zinko.com](http://www.zinko.com)

REV 102308



No.	Description	ZHP-20	ZHP-30
1	Pump Housing/Reservoir	923-020-01	923-030-01
2	Screw	923-020-02	
3	Check Ball	923-020-03	
4	Set Screw	923-020-04	
5	* O-Ring	RP	
6	Backup Ring	923-020-06	
7	Pump Piston	923-020-07	
8	Snap Ring	923-020-08	
9	* O-Ring	RP	
10	Backup Ring	923-020-10	
11	Pump Piston	923-020-11	
12	Piston Ring	923-020-12	
13	Yoke Pin	923-020-13	
14	Retaining Ring	923-020-14	
15	Yoke	923-020-15	
16	Handle	923-020-16	923-030-16
17	Handle Ring	923-020-17	
18	* Oil Seal	RP	
19	Couplers	923-020-19	
20	Release Valve	923-020-20	
21	Air Release Screw	923-020-21	

No.	Description	ZHP-20	ZHP-30
22	Check Ball	923-020-22	
23	Check Ball	923-020-23	
24	Spring	923-020-24	
25	Washer	923-020-25	
26	Valve Cover Screw	923-020-26	
27	Check Ball	923-020-27	
28	Spring End Cap	923-020-28	
29	Long Separator Spring	923-020-29	
30	* O-Ring	RP	
31	Overload Cover Screw	923-020-31	
32	Cap	923-020-32	
33	Short Separator Spring	923-020-33	
34	Washer	923-020-34	
35	Pin	923-020-35	
36	Yoke Cover	923-020-36	
37	* O-Ring	RP	
38	Screw	923-020-38	
39	Backup Ring	923-020-39	
RP	Repair Kits (All * above)	923-020-RP	
40	6' Hose (optional)	92110-02	
41	3/8" coupler	9210308-H	

\* 40 & 41 are optional parts.